

IMAGE Capture | Plus

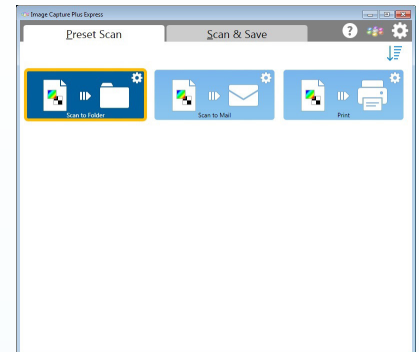
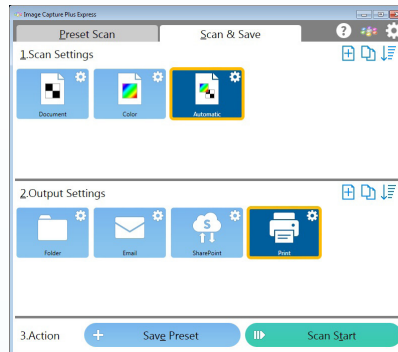
Panasonic
BUSINESS

Image Capture Plus Express is a software application designed to scan from Panasonic document scanners via an intuitive user interface to create image files. Image Capture Plus Express is an extension of Image Capture Plus, featuring a simplified user experience for users who do not require the advanced user interface for daily scanning requirements. Image Capture Plus Express offers the best of both worlds by allowing users to switch between express and standard applications should the advanced user interface be required.

SIMPLE USER INTERFACE

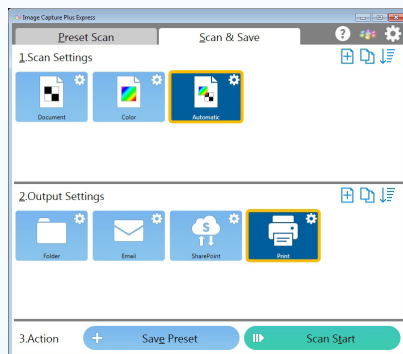
Image Capture Plus Express provides a simple visual user interface which utilizes large descriptive icons for intuitive operation and minimal training.

With Image Capture Plus Express, users can effortlessly scan documents or create automated scanning tasks with just a few mouse clicks. No more cumbersome configurations, simply select a document type, destination and the scan job is created.



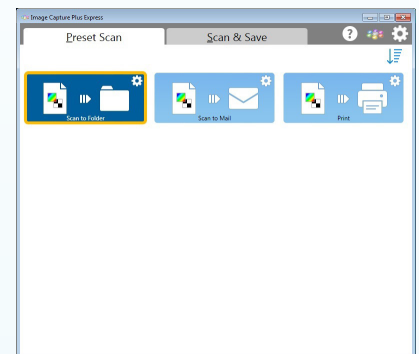
SCAN & SAVE DOCUMENTS

The Scan & Save tab provides a list of document scan and output settings which can be used for immediate scanning or saved as a preset for routine operations all within 3 clicks.



ONE-CLICK SCAN OPERATION

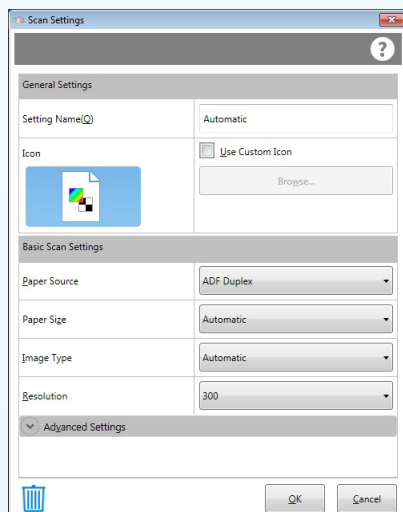
The Preset Scan tab provides a list of one-touch scan jobs which can be created within Image Capture Plus or Image Capture Plus Express. Simply click on the desired preset to begin scanning and automatically output the documents.



CUSTOMIZABLE SCAN SETTINGS

The Scan Settings configuration window offers the ability to create and label customized scanner settings including the creation of custom icons for easily identifying document type, like an invoice or form.

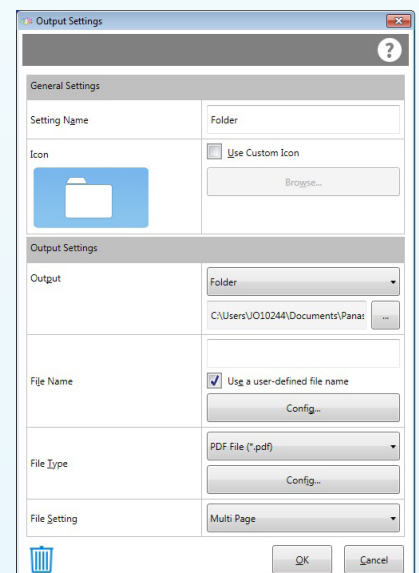
By default most of the advanced features are automatically enabled such as autocrop, blank page removal, deskew, double feed detection and more.



CUSTOMIZABLE OUTPUT SETTINGS

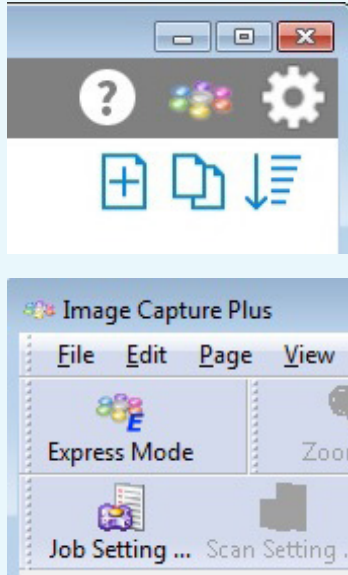
The Output Settings dialog box offers the ability to create and label output destinations, corresponding file types and any specific file naming conventions necessary.

Available file types include PDF, Searchable PDF, JPG & TIFF. Users can also customize the default file name type for easy searching of scanned documents.



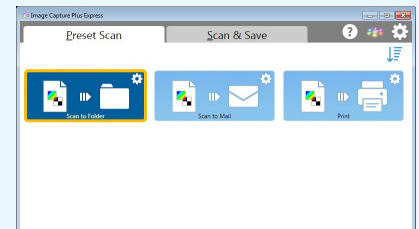
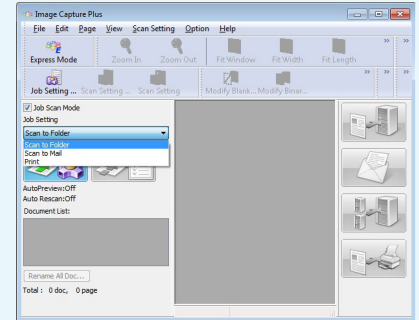
SIMPLE APPLICATION SWITCHING

Since Image Capture Plus Express is an extended application of Image Capture Plus, users can easily switch between the express and standard application with a single click.



ADVANCED JOB CREATION

Advanced Jobs can be created within Image Capture Plus. Once created, the user is able to execute the scan job from Image Capture Plus or Image Capture Plus Express.



Specifications

AVAILABLE FEATURES

- Dynamic Threshold, Brightness (1-16), Contrast (1-16), Deskew, Rotate (Automatic, Off, 90, 180, -90), Blank Page Removal, Border Removal, Hole Removal, Double Exposure (Off, On, Auto (A6 or smaller)), Double Feed Detection, Continuous Scanning Mode

AVAILABLE DESTINATIONS

- PC Folder, Email, SharePoint, Print

OUTPUT FILE TYPES

- TIFF, JPEG, PDF, PDF/A, PDF (Searchable), PDF/A (Searchable)

FILE NAME TYPE

- Data, Time, Counter, Counter Initial Number, Counter Digit (5, 1-7)

Systems Requirements

SUPPORTED MODELS

- KV-S1015C / KV-S1026C
- KV-S1027C / KV-S1057C, KV-S1025C, KV-S1045C, KV-S1046C, KV-S1065C
- KV-S2087, KV-S2028C / KV-S2048C
- KV-S5046H / KV-S5076H, KV-S5055C
- KV-S4065CL / KV-S4065CW, KV-S4085CW
- KV-S7075C, KV-S7097
- KV-SS080 Flatbed Option*

SUPPORTED OS

- Windows® 7 (32 bit/64 bit), Windows® 8 (32 bit/64 bit), Windows® 8.1 (32bit/64bit), Windows® 10 (32 bit/64 bit)

.NET FRAMEWORK

- Net Framework 3.5 SP1

*KV-S1046C/1065C requires Firmware version 2.0 or higher for flatbed support in Image Capture Plus Express.

FOR MORE INFORMATION, CONTACT:
documentmanagement@us.panasonic.com
877.207.0035

TO DOWNLOAD, VISIT:
<http://panasonic.net/pcc/support/scanner/icp.html>